



Week Ending: Friday, 12th June 2026

@Green_MeadowPS

Dear Parents,

We've had another busy, productive and fun-filled week at Green Meadow! Year 1 have been taking their phonics screening check and have amazed all the adults with their superb phonic knowledge!

We are all very much looking forward to Enterprise Week, next week. Look out for further details about how you can support the children later in the newsletter.

Best wishes,
Mrs Cross and Mrs Stirrop

**PE and
Outdoor
Learning
day**



**PLEASE NOTE
THE CHANGE OF
DAY FOR YEAR 5
PE.**

**Monday
Year 2**

**Tuesday
Year 3 and
Year 4**

**Wednesday
Year 5 and
Year 1**

**Thursday
Year 6**

**Friday
Year 6 (Coach
Ella) and
Reception**

**Please wear
PE kit to
school on PE
days.**



Cup Winners!



Well done to our Year 5 and 6 footballers who were the winners of the Fioretti Cup this week! This is a brand new competition for Birmingham Primary Schools, so Green Meadow were overjoyed to be the first winners. The team played admirably, winning all their games. What an achievement!

Congratulations to our Top Table!

Jackson
Albie
Hugo
Elodie
Ire



Saja
Darcie
Khloe
Oscar
Zidane
Naomi

Well done to all our lunchtime role models!



Enterprise Week

On Monday, Green Meadow turns into Dragon's Den with all classes getting the chance to form their own company! Each class will receive a £10 investment. They will decide on a product to make or a service to sell. Throughout the week, the classes will work in finance, marketing, advertising and production teams. This year we will be welcoming business mentors from King Edward VI Five Ways School and the Universities of Nottingham and Exeter to support the children in making shrewd business decisions. Classes will be able to keep any profit they make to spend on an end of term treat.

On Friday 19th June 2026, we would like to invite all parents to join us for our Enterprise Fair. This will be your chance to buy our amazing goods, products and services. Please collect your child as usual before attending the fair, which will take place on the field (weather permitting). We hope to see you there!



WORLD CUP CUP

FOR A CAUSE

with Shenley Community Church

A COMMUNITY SCREENING OF
ENGLAND v CROATIA

WEDNESDAY 17TH JUNE @ SHENLEY COURT HALL



DOORS OPEN

8PM

World Cup themed
kids fun,
face-painting!



KICK OFF

9PM



**WANT TO SUPPORT ENGLAND WITH OTHERS
BUT A BOOZY PUB DOESN'T WORK FOR YOU?**

Book in for this **alcohol-free**, family-friendly
community event aimed at families & anyone
in Shenley who wants to cheer on England!

£5

PER
HOUSEHOLD



RAISING FUNDS FOR THE LOCAL WOMEN'S AID

Let's help kick the link between violence and football.

SIGN UP ESSENTIAL!

shenleycommunitychurch.org.uk/cfac



Putting the fun into fundraising
one event at a time!





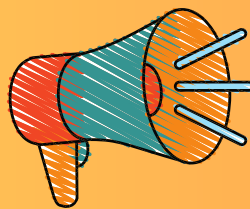
CELEBRATING GREAT LEARNING!



Well done to all of the children who have been practising their spelling on **Spelling Shed** this week. Our class leader board this week has in **Saturn** 1st place, **Bournville** in 2nd and Jupiter in 3rd place! Well done to our whole-school top speller, **Diana** in **Saturn**, who helped her class secure top place!



A huge well done to this week's **Outstanding Orators**, **A** in Leopards, **E** in Zebras, **A** in Tigers, **G** in Lions, **Cody** in Giraffes, **Ruby** in Gazelles, **Cali** in Bournville, **Felicity** in Cadbury **Archie** in Shakespeare, **William** in Tolkien, **Jack** in Mars, **Hollie** in Saturn, **Elsie** in Jupiter and **Prince** in Pluto. You have all impressed us with how well you have demonstrated your oracy skills this week.



Congratulations to our **Readers of the Week**- who get to choose their own book to take home from the world-famous Green Meadow Book Vending Machine! **B** in Zebras, **A** in Leopards, **G** in Lions, **A** in Tigers, **Oliver** in Gazelles, **Zidane** in Giraffes, **Xin** in Cadbury, **Leo** in Bournville, **Amari** in Tolkien, **Xinhe** in Shakespeare, **Brooklyn** in Saturn, in Mars, **Oscar** in Pluto and **Dylan** in Jupiter.



CELEBRATION TIME!

ABOVE AND BEYOND!

Well done to all the children in school who received hot chocolate nominations from their teachers for **GOING ABOVE AND BEYOND!**

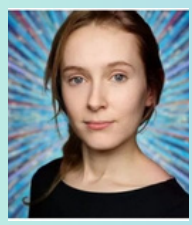
This week, an incredible 166 children from across school received nominations - that's **AMAZING!** We are all so proud of you! We hope you have your certificates displayed somewhere at home to celebrate.

House Points

A record number of house points have been awarded this week to children demonstrating our school values of **READY, RESPECTFUL** and **SAFE** and for making sure they show how helpful, friendly and supportive everyone at Green Meadow is. Well done, everyone!



304



198



278



250



256

Be an Attendance

H.E.R.O.

Here Everyday Ready On time

Well done to **Leopards** in KS1 and Shakespeare in KS2 who are our best attending classes this week.

The most punctual class in school this week were **Giraffes** who were in school on time every day to make the most of their learning time.

WEEKLY ASSEMBLY



ASK YOUR CHILD TO TELL YOU ABOUT THE STORIES BEHIND THE PICTURES WE LOOKED AT IN ASSEMBLY THIS WEEK AND HOW IT RELATES TO BRITISH VALUES



Reminder of absence procedures

If your child is not fit for school, please call us on 0121 475 4505 on the first and every day of absence. **We cannot accept in-app messages or emails.** The office phone lines open at 8am.



Parent and carer information leaflet **EMOTIONALLY BASED SCHOOL NONE ATTENDANCE (EBSNA)**

If your child is struggling to attend school because of anxiety, stress or other emotional reasons, this is known as Emotionally Based School Avoidance (EBSA). This term describes children and young people who experience persistent challenges in attending school due to an overwhelm of negative feelings, such as anxiety or fear.

EBSA is not uncommon and can happen for many reasons, including anxiety about learning and being in the classroom, friendship upsets, feeling overwhelmed by the school environment, or feeling unable to fit in and cope with the demands of the school day.

PUSH AND PULL FACTORS

EBSA involves many complex factors. Often, these are not known about initially, and have to be discovered, through sensitive conversations between a parent and child, between a parent and the child's school, and between the child and any supporting adults and professionals.

Push factors can be described as those that encourage a child to attend school

Pull factors can be described as those that reduce the likelihood of the child attending school.

GMPS ATTENDANCE BY NUMBER

Each week we will let you know the progress on our drive to improve whole school attendance.

PROGRESS TOWARDS DFE BASELINE ATTENDANCE TARGET 

WHOLE SCHOOL ATTENDANCE THIS WEEK- (NATIONAL EXPECTATION 96.4%)- 93.17% 

NUMBER OF LEAVE IN TERM TIME FINES ISSUED TO PARENTS SINCE THE START OF TERM- 33 

NUMBER OF PARENTS TAKEN STRAIGHT TO COURT THIS ACADEMIC YEAR- 4 

RUNNING COST OF FINES ISSUED TO GREEN MEADOW PARENTS THIS ACADEMIC YEAR- £15, 133 

NUMBER OF CHILDREN BROUGHT TO SCHOOL LATE THIS WEEK- 67 

NUMBER OF MINUTES OF LOST LEARNING DUE TO LATENESS- 736 

NUMBER OF DAYS OF LOST LEARNING DUE TO LEAVE IN TERM TIME- 16 





MENU

WE ARE ON WEEK 2 OF THE MENU!

	MONDAY	TUESDAY	WEDNESDAY	THURSDAY	FRIDAY
WEEK 1 23/2, 16/3, 20/4, 11/5, 8/6, 29/6	Park Sausage in Onion Gravy Veggie Sausage in Onion Gravy (V) Creamy Mash, Peas, Sweetcorn Waffle with Toffee Sauce Fresh Fruit & Yoghurt	Chinese Chicken / Quorn (V) Curry Vegetable Samosa & Curry Sauce (V) Boiled Rice, Naan Bread, Peas & Sweetcorn Fruit Crumble Cake Fresh Fruit & Yoghurt	Homemade Chicken Pie Cheese, Chive & Potato Pie (V) Roast Potatoes, Carrots, Green Beans, Baked Beans Assorted Ice Cream Fresh Fruit & Yoghurt	Beef Pastá Bolognese Tomato & Basil Pasta Ragu (V) Fish Stars Diced Potatoes, Broccoli, Baked Beans Homemade Gingerbread Cookie Fresh Fruit & Yoghurt	BBQ Chicken & Sweetcorn Pizza Margherita Pizza (V) Chipped Potatoes, Baked Beans, Peas Strawberry Mousse Fresh Fruit & Yoghurt
	All Day Brunch All Day Veggie Brunch (V) Fish Fingers with Lemon Wedge Omelette & Hash Brown, Sauté Potatoes, Baked Beans, Sweetcorn American Pancakes with Strawberry Sauce Fresh Fruit & Yoghurt	Sticky BBQ Chicken Sticky BBQ Quorn (V) Cheese & Onion Roll (V) Potato Wedges, Garlic Bread, Broccoli, Peas Chocolate Concrete Fresh Fruit & Yoghurt	Roast Chicken with Stuffing Veggie Sausage Toad in the Hole (V) Roasted New Potatoes, Carrots, Green Beans Strawberry Jelly & Fruit Fresh Fruit & Yoghurt	Beef /Veggie (V) Burger in a Bun Mac & Broccoli Cheese (V) Herby Diced Potatoes, Steamed Rice, Peas & Sweetcorn, Baked Beans Golden Flapjack Fresh Fruit & Yoghurt	Cheesy Meatball Pizza Margherita Pizza (V) Chipped Potatoes, Peas, Baked Beans Iced Sponge Tray Bake Fresh Fruit & Yoghurt
WEEK 3 9/3, 13/4, 4/5, 1/6, 22/6, 13/7	Park/Veggie Hot Dogs (V) with Fried Onions Fish Fingers with Lemon Wedge Sauté Potatoes, Sweetcorn, Baked Beans Raspberry Ripple Ice Cream Fresh Fruit & Yoghurt	Chicken & Tomato Pasta Bake Herby Tomato Pasta Bake (V) Veggie Nuggets (V) Diced Potatoes, Garlic Slice, Sweetcorn & Peppers Banana Toffee Sponge Fresh Fruit & Yoghurt	Roast Turkey with Sage & Onion Stuffing Herb Roasted Quorn (V) Minted New Potatoes, Carrots, Peas Strawberry Jelly Fresh Fruit & Yoghurt	Mild Chicken / Vegetable (V) Korma Battered Fish with Lemon Wedge Steamed Rice, Naan Bread, Spicy Potato Wedges, Sweetcorn Iced Shortbread Fresh Fruit & Yoghurt	Pepperoni Pizza Margherita Pizza (V) Chipped Potatoes, Peas, Baked Beans Chocolate Brownie Fresh Fruit & Yoghurt
	Available daily- Fresh bread / Jacket Potato with a variety of fillings / sandwich or wrap with a Hot carb option / Fresh salad cart / Fresh Fruit				
	<small>ALLERGEN INFORMATION: MENU DESCRIPTIONS MAY NOT LIST EVERY INDIVIDUAL INGREDIENT. WE ARE AWARE OF THE PRESENCE OF ALLERGENS REQUIRING LABELLING, SO PLEASE ASK A MEMBER OF THE CATERING TEAM SHOULD YOU REQUIRE ANY MORE DETAILS. VEGETARIAN OPTIONS ARE INDICATED BY THE (V) SYMBOL.</small>				

School meals cost £3 per day, payable via Arbor, for Years 3, 4, 5 & 6, unless you are entitled to free school meals. Please keep up to date with school meal payments each week. Please note that for Reception, Year 1 and Year 2 ALL children are entitled to universal free school meals.



UPCOMING DATES FOR YOUR DIARY...

Summer 2 Week 9
w/b 15.06.26
Enterprise Week

Monday, 15th June 2026

Tuesday, 16th June 2026
Year 5 KEVI project Positive
Footprints Session

Wednesday, 17th June 2026
Women's Cricket World Cup Visit
for invited pupils

Thursday 18th June 2026

Friday, 19th June 2026
Year 5 KEVI project Positive
Footprints Session

Year 6 World of Work Day

**Enterprise Summer Fair (after
school)**

Summer 2 Week 10
w/b 22.06.26

Monday, 22nd June 2026

Year 6 swimming
3pm SRE resources available for
parents to view in the hall

Tuesday, 23rd June 2026

Year 3 and 4 Excelsior Football
Tournament at Green Meadow
Year 6 swimming

Wednesday, 24th June 2026

Year 6 swimming

Thursday 25th June 2026

Year 6 swimming

Friday, 26th June 2026

Birmingham City Mission
Assemblies 2.15pm KS1 2.50pm
KS2

Year 6 swimming

Key Dates for the Summer Term

20-22.05.26 Year 4 Blackwell Residential Trip

21.05.26 Word Cup Special Menu

22.05.26 OPAL fundraising non-school uniform day

25-29.05.26 MAY HALF TERM

wb 01.06.26 Year 4 Multiplication Check fortnight starts

02.06.26 Year 2 parents 'Ready for Year 3' Reading

Workshop 2.45pm in the hall

05.06.25 Reception Year Group Assembly

wb 08.06.26 Year 1 Phonics Screening Check

wb 15.06.26 Enterprise Week

19.06.26 Year 6 World of Work Day

19.06.26 Enterprise Summer Fair after school

wb 22.06.26 Year 6 Swimming Week

23.06.26 Year 5 Oracy Outcome Flipped Parents' Evening

25.06.26 Year 2, 4 and 6 'I can save a life' First Aid Training

26.06.26 Speak Up! Speak Out! Speech competition

wb 29.06.26 Year 6 Swimming Week

01.07.26 Transition Day

03.07.26 Sports Day

06-10.07.26 Year 6 France Trip

15.07.26 Excelsior Olympics

**PLEASE NOTE CHANGE OF DATE FOR YEAR 6 LEAVERS
ASSEMBLY**

16.07.26 Year 6 Leavers Assembly 9am

16.07.26 Year 6 VIP Day

16.07.26 Seaside Special Menu

17.07.26 BREAK UP FOR SUMMER

Green Meadow Primary School Term Dates 2026 - 2027

Autumn Term 2026

Term starts: Tuesday 1 September 2026

STAFF TRAINING DAYS 01.09.26 AND 02.09.26- school closed to pupils

Half-term: Monday 26 October 2026 to Friday 30 October 2026

STAFF TRAINING DAY 02.11.26 and 03.11.26- school closed to pupils

Term ends: Friday 18 December 2026

Spring Term 2027

Term starts: Monday 4 January 2027

STAFF TRAINING DAY 04.01.27- school closed to pupils

Half-term: Monday 15 February 2027 to Friday 19 February 2027

Term ends: Thursday 25 March 2027

Summer Term 2027

Term starts: Monday 12 April 2027

Half-term: Monday 31 May 2027 to Friday 4 June 2027

STAFF TRAINING DAY 21.07.27- school closed to pupils

Term ends: Wednesday 21 July 2027

